



## Programme of orienteering competition

### “VYBORGSKAYA TROIKA-2014”

#### 1. Goals and purposes

- 1.1. Popularization and development of orienteering.
- 1.2. Promotion of healthy lifestyles.
- 1.3. Improvement of orienteering skills.

#### 2. Competition management

Competition is held by non-commercial partnership “Federation of orienteering of Vyborg and Vyborg region” and orienteering club «NORD WEST».

E-mail: kosorukov\_anton@inbox.ru

#### 3. Time and place

The start takes place on 24-25 of May, 2014 in Russia, Leningradskaya region, Vyborg city, in 30 km from the Finnish border.

#### 4. Event programme

Date	Time	Where	Start interval	What
Sat 24/05/2014	12:00	Vyborg city, Batareinaya gora	1 minute	medium distance in the set direction (30-35 minutes)
Sat 24/05/2014	24:00	Vyborg city, Papula	1 minute	night orienteering, medium distance in the set direction (25-35 minutes)
Sun 25/05/2014	12:00	Krasniy holm	1 minute	medium distance in the set direction (30-40 minutes)

#### 5. Si-Cards

The system of electronic punching is SportIdent system. Si-Card number should be specified by the owner in the application for the competition. Si-Card may be rent in the competition centre, price – 30 rubles/start for MW21-MW50, 10 rubles/start for other groups.

#### 6. Entry fee

The following age groups are participating in the competition:

MW10, MW12, MW14, MW16, MW18, MW21, MW35, MW40, MW45, MW50, MW55, MW60, MW70, MW80, Open group. Prices are given in rubles.

	MW21- MW55	MW16-18, MW60	MW70-80 MW10-14	Open
Application before 01/03/2014				
All starts	600	300	200	200
1 start	200	100	100	100
Application before 21/05/2014				
All starts	750	450	300	200
1 start	300	200	150	100

Only sportsmen of age groups MW16-MW55 can participate in the night start.

Members of large families (proved by documents) can get a 50% discount.

Application for participation in the competition is accepted up to 23:59 May 21, 2014. Application after this date (or changes in the application) may be done in the competition centre, with the 50% increase of the entry fee.

## 7. Application and payment

Application is online - [http://sportident.ru/entry/event\\_info.php?id=558](http://sportident.ru/entry/event_info.php?id=558)

Payment will be made in the competition centre in cash. If necessary you can get a payment receipt.

If a person applied but didn't start, such a person should pay 50% of entry fee.

## 8. Prize giving ceremony

Definition of the winners of the competition is produced by the sum of the three starting points. The winners (1<sup>st</sup>, 2<sup>nd</sup>, 3<sup>rd</sup> positions) will be awarded with medals and prizes. Awarding will take place after the results of on-site event on May 25.

## 9. Competition areas

### **May 24, 2014. Day-time start. Batareinaya gora area**

*Landscape.* The territory of the competition consists of three areas: Park Batareinaya gora - 40%, a city block on the hillside - 20%, a city block in the plains - 40%.

Batareinaya gora is the hill closed for 50%. Forest predominantly is park, runnable. Vertical drop on a slope of up to 30 meters. The road network is highly developed. In the park there are complex of fortifications of the XIX century. There are climbing structures on the slopes of the mountain.



*Boundaries of the map.* The map is bounded by major streets of the city of Vyborg.

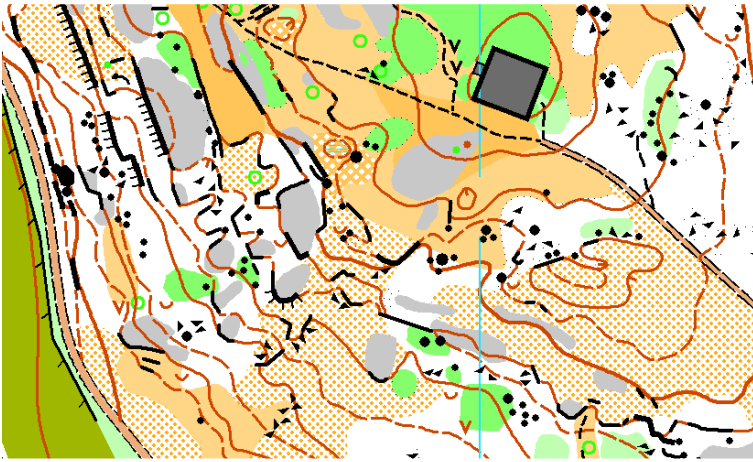
*Dangerous places.* Batareinaya gora: ditches, redoubts and slopes. Urban development: motor roads.

**The intersection of major roads on the borders of areas must be carried out only by a footbridge and corridors indicated on the map!**

The distance includes areas of the city as well as forest or park areas, so the landscape will be various in the same distance.

### **May 24, 2014. Night-time start. Papula**

*Landscape.* Papula area is a hill closed for 70%. Forest includes various terrain, from runnable parks to difficult-to-pass areas. Vertical drop on a slope of up to 35 meters. The road network is highly developed. The southern slope of the mountain facing Vyborg city is steep, with many cliffs, rocky structures. There is telecentre at the heart of the area.



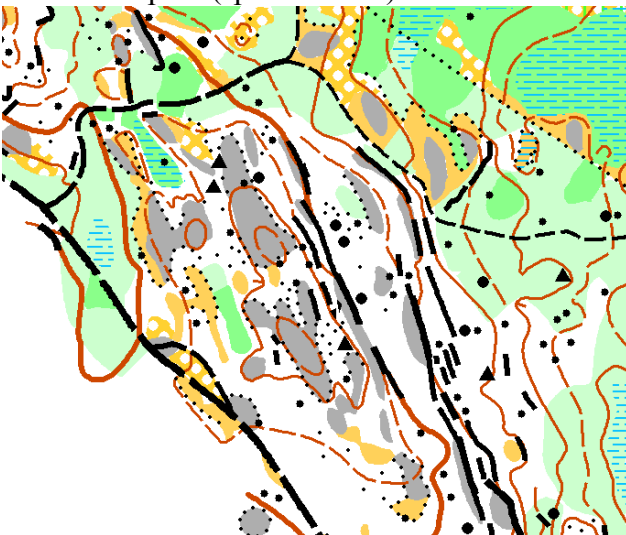
*Boundaries of the map.* Area is bounded by highways to the north and west, Raduga Bay to the south and the railway to the east.

*Dangerous places.* Precipices.

Through the distance athletes will run on a hill above the beautiful night city full of lights.

**May 25, 2014. Day-time start. Krasniy holm.**

*Landscape.* Competition area is closed for 85%. It is a rocky massif with a height difference on the slopes of up to 30 meters. Forest predominantly is softwood from runnable (pine on rocky hills) to difficult-to pass (spruce forest).



*Boundaries of the map.* Area is bounded by highway to the north, by lake to the west, by the village Krasniy holm to the south. There is no clear boundary to the east, but close to the map border Krasnokholmskaya lake is situated, with fields in front of it, without any forest vegetation there.

*Dangerous places.* Precipices.

The third day is expected to be full of more difficult orienteering in an interesting picturesque forest and rocky terrain.

**10. Maps**

Day	Scale	Contour interval	Year	Used before
May 24, 2014. Day-time start	1:5000	5 m	2011-2013	Partly in competition «Zolotaya osen»
May 24, 2014. Night-time start	1:5000	5 m	2013	Partly in competition «Zolotaya osen»
May 25, 2014. Day-time start	1:5000	5 m	2013	Never used

## 11. Start location

Day	Competition centre	Distance from the railway station
May 24, 2014. Day-time start	Vyborg city, Batareinaya gora	2,0 km
May 24, 2014. Night-time start	Papula, Lokomotiv stadium	2,3 km
May 25, 2014. Day-time start	Krasniy holm	10,0 km

Event center in the village Krasniy holm is located near the final stop of the city bus # 8.

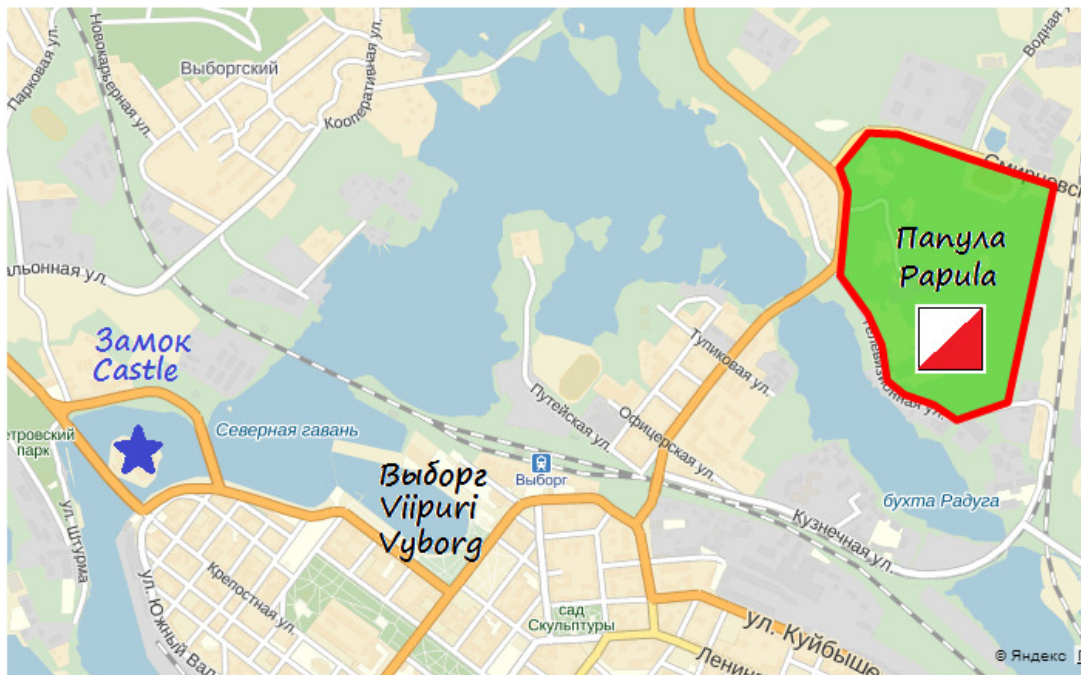
More detailed diagrams of the event center will be posted in the following information messages. Also there will be given information on the organization of living.

## 12. Information support

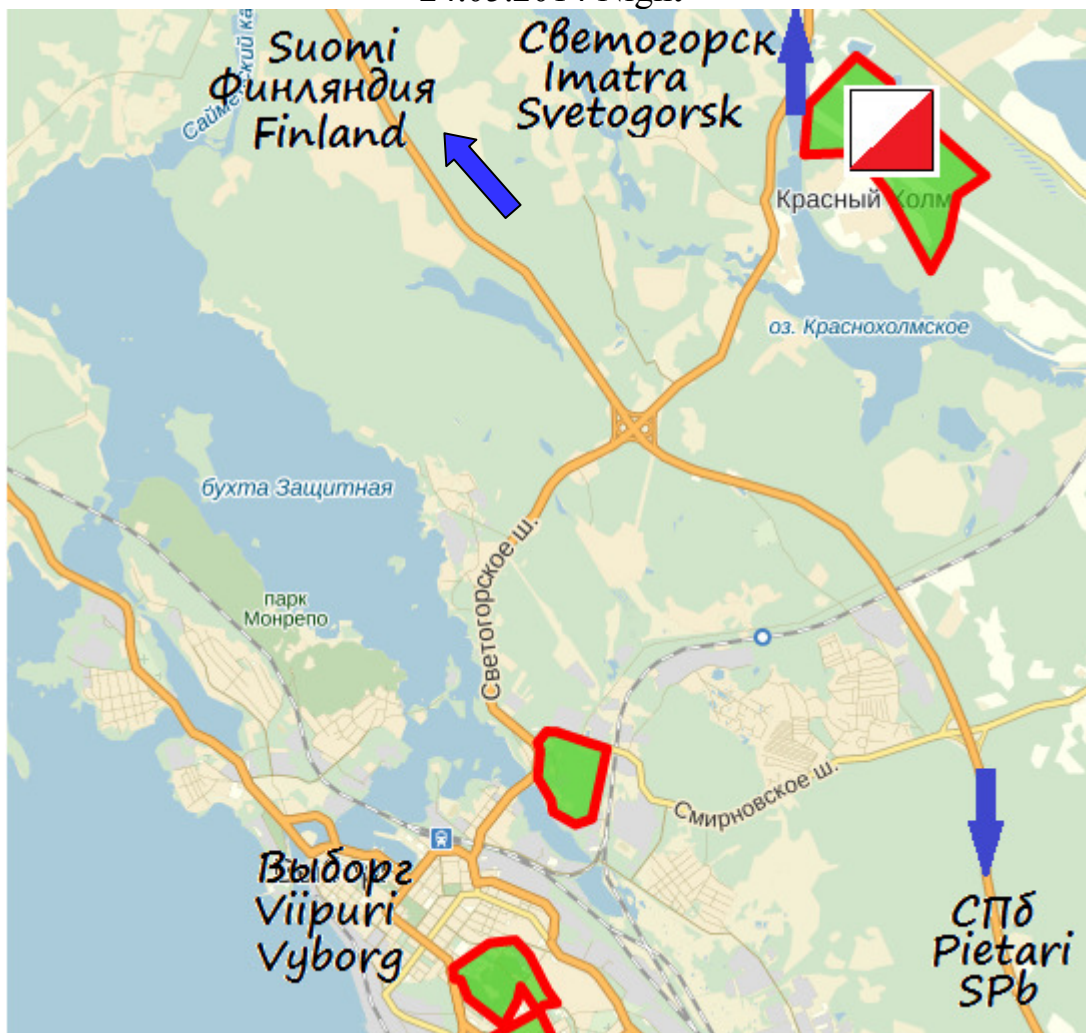
Information about the competition will be distributed through the site <http://kcp.spb.ru/>



24.05.2014 Day



24.05.2014 Night



25.05.2014 Day